



PROTECTING the **WILDERNESS** of our **UNIQUE ARCHIPELAGO**



Conservation LEADERSHIP on Georgian Bay

A CONSERVATION PLAN FOR
21,000 acres

PRIORITIZED
15 key
specific habitat types

1,500+ kids
have attended
Conservation Quest

2,000
annual visits
to recreational
community properties

LAND BASED
STUDIES
(scientific research programs)

Partnered
with
over **15**
SCIENCE BASED ORGANIZATIONS



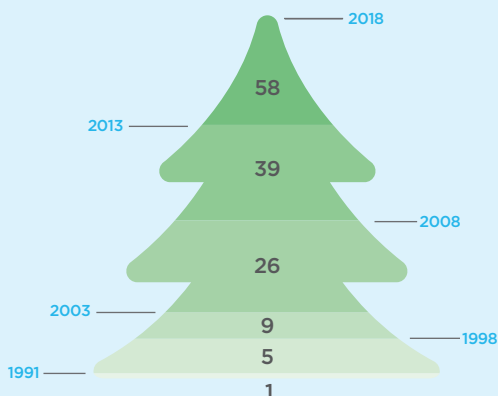
PROTECT
880 acres
of recreational
community properties

45
species at risk
7
provincially
significant wetlands

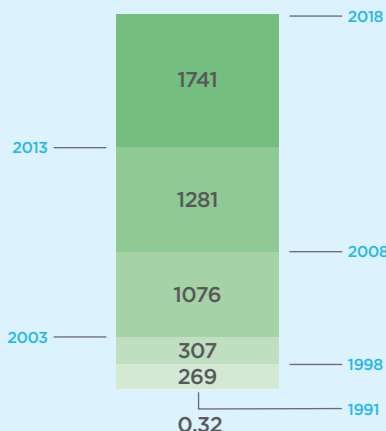
MONITOR &
MAINTAIN
6,000+ acres

120+
PROPERTY
STEWARDS

PROTECTED PROPERTIES
OVER THE YEARS



ACREAGE OVER THE YEARS



GEORGIAN BAY SPECIES
AT RISK



20
birds



12
reptiles and
amphibians



5
mammals



5
plants

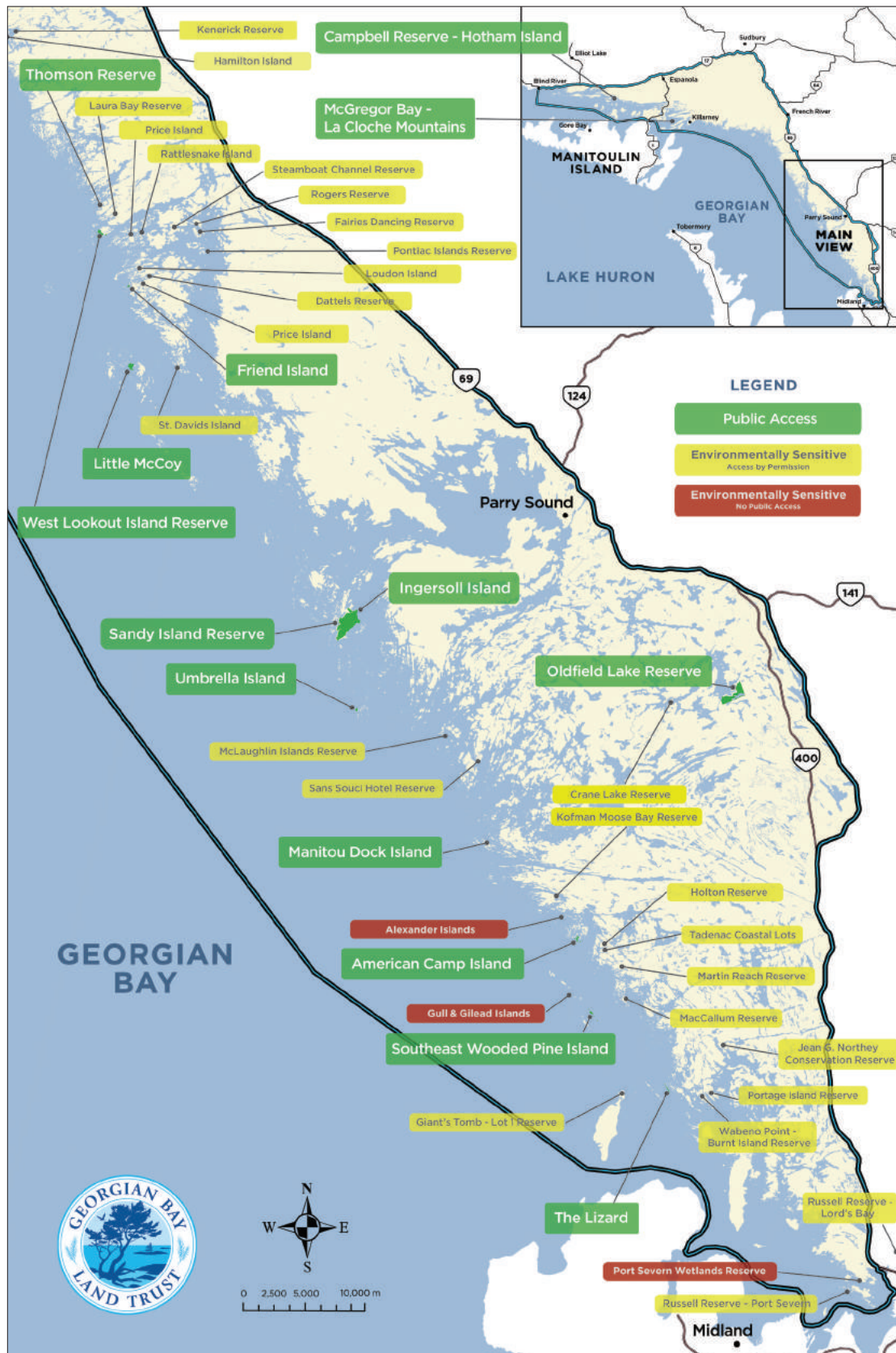


3
insects



3
fish

Georgian Bay LAND TRUST **Properties**



DEAR FRIENDS

Thank you to each one of our supporters for another amazing year in land conservation.

2018 began with the fantastic news of the federal government's commitment of \$1.3 billion to conservation over 5 years, including \$500 million towards a new Nature Fund – an incredible opportunity to advance conservation on Georgian Bay.

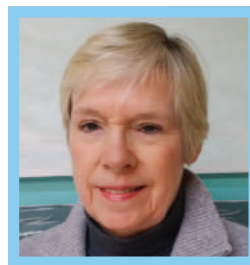
Over the year, details of funding and partnership opportunities emerged, and the GBLT was kept busy with applications, negotiations, and collaborations. We were absolutely delighted to receive approval for our “Quickstart” application in the fall of 2018, which culminated in the protection of 5,000+ acres of outstanding Georgian Bay habitat in early 2019. Our collaborative efforts as part of the Canadian Land Trusts Working Group and other regional partnerships are ongoing, and we hope they will result in additional successes over the next 4 years of the Nature Fund.

Our conservation work continues to focus on our five key pillars: conservation planning, land protection, stewardship, research, and education. In 2018, we added over 230 acres to our protected areas through the generous contributions of land and easement donors. The Dattels Reserve has been expanded to cover an entire island in Pointe au Baril, the new Ingram Biodiversity Reserve protects a Provincially Significant Wetland, and Estelle's Reserve protects

a large portion of the western shoreline of Blackstone Lake. We continued to support migratory bird research through the construction of new Motus wildlife tracking stations and by directly supporting a new PhD study on Whip-poor-wills and Nighthawks. We also launched the LANDMARK Speaker Series to bring lectures on leading conservation topics to communities around Georgian Bay.

The Georgian Bay Land Trust's successes can only be achieved through the work and dedication of our fantastic community of supporters. We are so grateful to each one of you for the role you play in protecting our shared Georgian Bay environment. Over the following pages, read more about what we've been able to accomplish together, and what lies ahead.

Have a wonderful summer!



JAN RUBY
Chair



BILL LOUGHEED
Executive Director

PLAN

Using science to identify and prioritize key habitats for conservation so that species are protected and our coastal ecosystem remains resilient

2018 was an exciting year for large-scale conservation planning on Georgian Bay and beyond. Georgian Bay Land Trust Executive Director Bill Lougheed played a key role in several multi-stakeholder projects centred around Canada's Nature Fund, a 5-year, \$1.3 billion investment with the potential to significantly impact conservation on Georgian Bay.



CANADIAN LAND TRUST WORKING GROUP

Bill is a core member of this group that worked to secure a role for land trusts within the Nature Fund, and planned for an equitable distribution of funding nationwide.

PROTECTING A 5,000+ ACRE WILDERNESS AREA

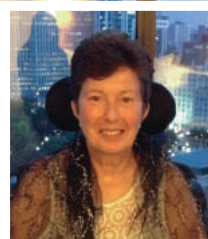
The Georgian Bay Land Trust's individual application to the Nature Fund's Quickstart program was approved. This allowed us to protect a large and extremely ecologically significant swath of habitat in eastern Georgian Bay in early 2019.

NATURAL HERITAGE CONSERVATION PROGRAM

The Canadian Land Trust Working Group joined with the Nature Conservancy of Canada, Ducks Unlimited Canada, and other key conservation partners to submit a collective application to this program, which will distribute \$100 million from the Nature Fund to conservation projects across the country.

Our conservation goal over the next three years is to make significant progress towards protecting an uninterrupted habitat corridor from Cognashene to the South Channel. Such a corridor will allow for successful species migration, provide greater resiliency against climate change, and support the survival of large mammals. We believe that the planning work we have done surrounding the Nature Fund in 2018 sets us up well to succeed in this goal.

SHEILA MacFEETERS MEMORIAL FUND



The Georgian Bay Land Trust received an incredibly generous and helpful gift in 2018 from the family of the late Sheila MacFeeters, which is designed to provide ongoing support for conservation planning and research. In 2018, the Sheila

MacFeeters Memorial Fund allowed us to conduct GIS mapping of wetlands and critical habitats over the 576,000 acre Georgian Bay Biosphere Reserve, as well as habitat connectivity mapping in the area between Port Severn and Parry Sound. These efforts, as well as additional mapping to take place in 2019, will form the backbone of a new Natural Area Conservation Plan to be completed next year. This plan will be available to municipalities, NGOs, individuals, and anyone else making planning and development decisions throughout the Georgian Bay Biosphere Reserve.

"We were looking for something where the gift would have lasting effects and one that would help inform us in order to better protect Georgian Bay. Sheila would smile and be pleased to know where her gift has gone."

MICHAEL WILLIAMS, SHEILA MACFEETERS' HUSBAND

PROTECT

Securing ecologically significant lands to protect habitats and species and to create open spaces for community enjoyment

Thank you to the generous land donors who helped us establish three new conservation reserves in 2018!



DATTELS RESERVE EXPANSION • 5.4 ACRES POINTE AU BARIL • DONATED BY JENNIFER DATTELS

A 10-year dream has been completed with the addition of 5.4 acres to the Dattels Reserve, which now covers an entire 10-acre island in Pointe au Baril's Hemlock Channel. Neighbouring conservationist Jennifer Dattels first purchased and donated the eastern half of the undeveloped island in 2009, and was able to complete her vision by donating the western half in 2018.

The Dattels Reserve is home to at least five species at risk: Eastern Musk Turtle, Midland Painted Turtle, Eastern Whip-poor-will, Eastern Massasauga Rattlesnake, and Eastern Milksnake. It's quite likely that other species at risk also make use of the island's habitat, which includes rock barrens, mixed forest, and a coastal marsh.



ESTELLE'S RESERVE • 134 ACRES BLACKSTONE LAKE • DONATED ANONYMOUSLY

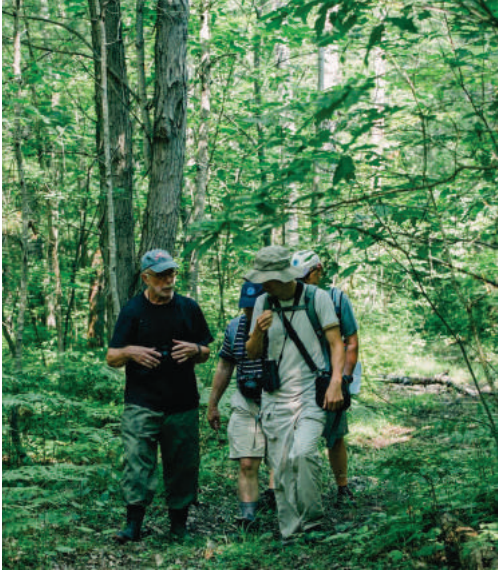
Estelle's Reserve is a 134-acre Conservation Easement located on the mainland shore of Blackstone Lake. As an inland property, its well-developed soil supports a different and more diverse array of flora than is typically found on coastal Georgian Bay. The shoreline of the property is predominantly mixed conifer and deciduous forest with occasional acidic rock barren outcrops, and the inland forest contains two small swamps.

Estelle's combination of vegetation communities provides excellent habitat for documented at-risk species, including Eastern Wood-Pewee (a small songbird of the flycatcher family), Wood Thrush, and Eastern Milksnake.

“My dreams were realized last year when the western half of the island came up for sale, allowing for a further purchase and donation to the GBLT. This made the Dattels Reserve complete at last. It is my pleasure to have protected the island from development, and to have preserved the natural beauty of Hemlock Channel.”

JENNIFER DATTELS

PROTECT



INGRAM BIODIVERSITY RESERVE • 92 ACRES • HONEY HARBOUR • DONATED BY JAY INGRAM

The Ingram Biodiversity Reserve protects 92 acres of prime wetland, forest, and rock barren habitat providing homes to dozens of animal species in the Honey Harbour / Port Severn area. Created as a Conservation Easement by landowner Jay Ingram, it is designed to ensure that his property's impressive ecological features remain intact forever, even if the land is sold or inherited by future generations.

The Ingram Biodiversity Reserve contains a large marsh that has been designated a Provincially Significant Wetland, as well as coniferous and deciduous forest, acidic and shrubbed rock barrens, and several other wetlands. These habitats are home to at least seven documented species at risk. Three specimens of Five-lined Skink, an Eastern Ribbonsnake, Blanding's Turtle, Snapping Turtle, and Monarch Butterfly were all sighted on the property during the baseline visit. Eastern Massasauga and Eastern Whip-poor-will have also been confirmed on the property.



"I'm really pleased that a significant piece of my property near Georgian Bay is now the 'Ingram Biodiversity Reserve.' It is a beautiful landscape, I'm delighted that it will remain that way and I thank the Georgian Bay Land Trust for making the transaction painless!"

JAY INGRAM

STEWARD

Working alongside communities to monitor and maintain wilderness lands forever

The GBLT stewardship program had a successful year in 2018, with big wins in Phragmites removal at Giant's Tomb and Sandy/Ingersoll Islands, and devoted property care by our many volunteers. Led by Land Protection Program Manager Brooks Greer, Summer Conservation Interns Anne Hughes and Sofia Vermeulen, and PaBIA Marine Patrollers Jenny Boughton and Abi Sorenson, our many stewards did a fantastic job caring for over 1,600 acres!



127 volunteer stewards



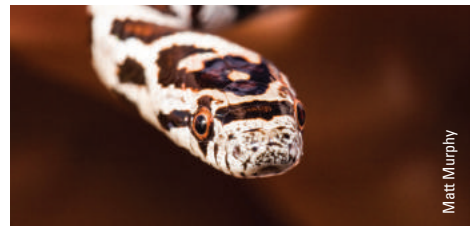
1 massive stand of Phragmites removed from Giant's Tomb Island with the help of MNRF Youth Stewardship Rangers, the Nature Conservancy of Canada, and GBLT volunteers!



191 property reports submitted



50 species observed making use of properties, including 14 species at risk



“End of season visit on a beautiful fall day. The islands had no sign of use and there was very little activity. A few lingering monarchs were the only sign of life.”

CHARLIE & SHIRLEY BALLANTYNE, STEWARDS AT GULL & GILEAD

LEARN

Advancing scientific knowledge by collaborating with academic partners and using our properties to support research in the biosphere

The Georgian Bay Land Trust supported four main research initiatives in 2018:



MOTUS WILDLIFE TRACKING PROGRAM WITH BIRD STUDIES CANADA

We were delighted to expand our involvement with the Motus program in 2018, by adding three new tracking stations to the GBLT network. These radio telemetry towers allow researchers to follow the movements of migratory birds all over the world, and better understand their habitat requirements.



EASTERN WHIP-POOR-WILL AND COMMON NIGHTHAWK STUDY WITH THE NORRIS LAB AT THE UNIVERSITY OF GUELPH

Ph.D. student Elora Grahame is researching the effect of roads on the breeding success of Eastern Whip-poor-wills and Common Nighthawks, two declining bird species in the Georgian Bay area. Her work relies on GBLT Motus towers to track the movements of adult and juvenile birds.



MASSASAUGA GESTATION SITE MONITORING WITH THE GEORGIAN BAY BIOSPHERE RESERVE (GBBR)

Georgian Bay Land Trust staff continued to monitor three known and suspected Massasauga gestation sites in the Wah Wah Taysee and Go Home Bay area, to collect long-term data about site fidelity, habitat changes, and species survival.



BAT MONITORING WITH ONTARIO LAND TRUST ALLIANCE (OLTA)

The MacCallum Reserve played host to a bat detector from June to October, which conducted acoustic monitoring for at-risk bats. We were happy to detect the presence of the endangered Little Brown Myotis, as well as four other bat species making use of this property's excellent habitat.

INSPIRE

Bringing communities together and cultivating the next generation of conservationists that will protect our land and species

19 COMMUNITY EVENTS engaged people of all ages with the natural world around them



“ROCK WALKS” with Dr. Nick Eyles brought Georgian Bay’s geology to life



LEARN TO FISH program introduced the next generation to responsible angling



LANDMARK SPEAKER SERIES brought speakers on leading conservation topics to three Georgian Bay communities



500+ KIDS attended Conservation Quest, where they learned about the natural world and how they can help protect it



26 FAMILIES participated in our inaugural Victoria Day Bird Survey, sighting 98 bird species

2000+ VISITORS enjoyed our protected properties

60+ PACKETS of pollinator-friendly seeds were planted by residents in communities around Georgian Bay



“I like to explore, look for berries, and all types of animals”

Young naturalist Everitt Youngkin tells us why he loves Georgian Bay. Everitt came and found us at American Camp to point out a Gartersnake he had found, and a few days later we found him selling homemade cookies in support of the GBLT. Everitt, we’re honoured by your support and can’t wait to see where your love of nature takes you!

LOOKING AHEAD

Our goals for 2019

PLAN

Complete an updated Natural Area Conservation Plan, using GIS mapping to integrate climate change resiliency and habitat corridors into our guiding document for land protection strategy

PROTECT

Protect several thousand acres of high-priority Georgian Bay habitat, making progress in our multi-year project to secure a continuous habitat corridor from Cognashene to Parry Sound

STEWARD

Continue to monitor and care for our protected lands alongside dedicated community volunteers, including increasing Phragmites control efforts at all three locations where it has been identified

LEARN

Collect baseline population data for one of Georgian Bay's most endangered species, the Spotted Turtle, and continue to support ongoing research projects on migratory birds, Massasauga Rattlesnakes, and at-risk bats

INSPIRE

Provide more opportunities for people to engage with their environment through Citizen Science, guided nature walks, and educational programs

FINANCIALS

Finance Committee

2018 was another very good year, financially speaking, for the Georgian Bay Land Trust.

While property donations were down from the prior years (but just wait for 2019!), financial donations were up. Thank you! Expenses were again very well controlled, resulting in the net assets of the GBLT increasing by more than \$ 1 million during 2018.

Financially, the GBLT is very strong, and well managed. This year our audit was not only clean, but also no adjusting entries were recommended. This is a rare accomplishment in the audit world, and speaks volumes of the work of both Irina and Bill. Well done and congratulations to both these individuals, as well as to Janet, Brooks, and Sarah, for all their care of our finances and records.

We are very fortunate to be served by such excellent and dedicated staff. And, of course, our many volunteers and supporters are second to none. The eastern shores of Georgian Bay are well protected by such a team.

Thank you very much to everyone!



PETER KOETSIER

Treasurer, Honey Harbour

Fundraising Committee

While we continue to work closely with grants from governments and foundations, the backbone of our fundraising comes from the commitment of our individual donor base. The GBLT's mission of conservation leadership on Georgian Bay is only possible through your generous donations, and we thank all of you who gave in 2018!

My hope for 2019 is that many of you will take the opportunity to get out and enjoy the Bay at one of GBLT'S many summer events, which are listed at gblt.org/events. Please come out and spend some time with our fabulous and hardworking staff. Connecting with you at these events is an important part of building a stronger GBLT.

Enjoy the Bay!



DAVID DORITTY

Fundraising Chair, Pointe au Baril

FINANCIALS

Georgian Bay Trust Foundation, Inc.

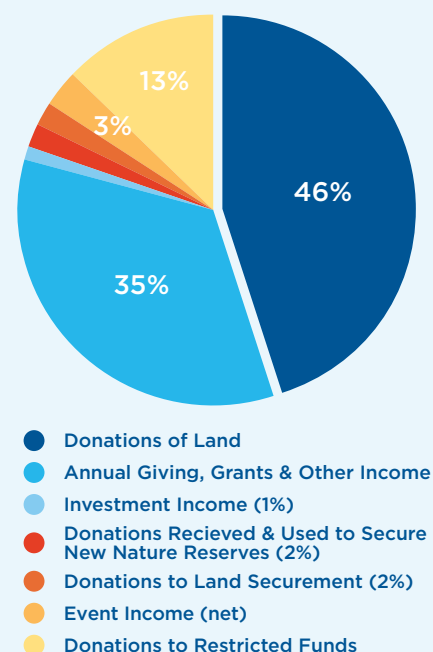
STATEMENT OF FINANCIAL POSITION | Year Ended December 31, 2018

ASSETS	2018	2017
CURRENT		
General	201,291	187,221
Conservation lands securement fund	207,805	200,000
Conservation working fund	450,000	400,000
	<u>859,096</u>	<u>787,221</u>
Sundry receivables	19,834	11,801
HST rebate receivable	10,521	38,483
Prepays	21,684	12,522
	<u>911,135</u>	<u>850,027</u>
LONG TERM INVESTMENTS		
Property and equipment	33,139,781	32,383,607
Stewardship and endowment funds	1,547,893	1,544,743
Sheila MacFeeters memorial fund	190,064	-
Wally and Marilyn King and family fund	115,115	115,115
	<u>35,903,988</u>	<u>34,893,492</u>
Total Assets		
	<u>35,903,988</u>	<u>34,893,492</u>
LIABILITIES		
Accounts payable and accrued liabilities	30,438	38,554
Deferred contributions	13,043	20,495
	<u>43,481</u>	<u>59,049</u>
NET ASSETS		
Unrestricted net assets	209,849	190,978
Internally restricted net assets	657,805	600,000
Externally restricted net assets	1,853,072	1,659,858
Net assets invested in property	33,139,781	32,383,607
	<u>35,860,507</u>	<u>34,834,443</u>
Total Liabilities & Net Assets	<u>35,903,988</u>	<u>34,893,492</u>

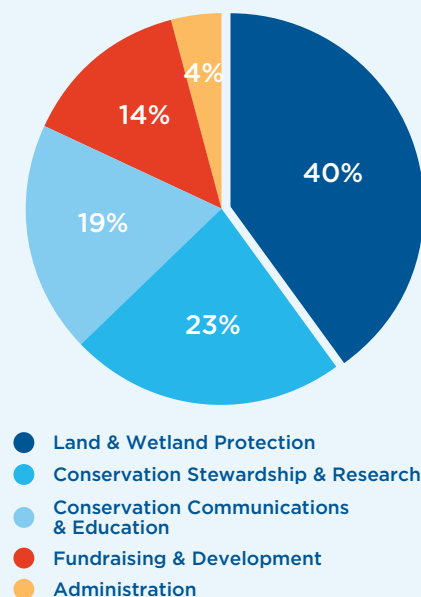
CONDENSED STATEMENT OF INCOME & EXPENDITURE | Jan 1 to Dec 31, 2018

OPERATING REVENUE	2018	2017
Donations & grants	551,872	501,645
Georgian Bay book sales (net)	13,742	22,569
Events (net)	44,348	40,916
Investment	14,407	144,797
Miscellaneous		1,084
	<u>624,369</u>	<u>711,011</u>
OPERATING EXPENSES		
Land & wetland protection	232,201	231,021
Conservation stewardship & research	133,511	114,490
Conservation communications & education	108,455	104,837
Fundraising	80,774	73,556
Administration	21,626	20,879
	<u>576,567</u>	<u>544,783</u>
Excess revenue over expenses	47,802	166,228
Transfer: to capital funds	28,931	141,157
Net Revenues	<u>18,871</u>	<u>25,071</u>
CAPITAL REVENUE		
Donations: externally restricted funds	208,214	26,450
Donations: land acquisition fund	26,983	67,771
Value of land secured	751,178	1,828,907
	<u>986,375</u>	<u>1,923,128</u>

REVENUE



EXPENSES



Georgian Bay Trust Foundation Inc.
(operating as Georgian Bay Land Trust)
Reg. Charity # 13195 8811 RR0001 Complete audited
financial statements are available upon request

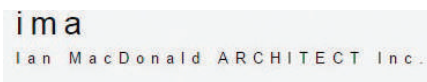
PARTNERS

American Friends of Canadian Land Trusts
Bayfield Nares Islanders Association
Bird Studies Canada
Blackstone Lake Cottagers Association
Blazing Star Environmental
Canadian Land Trust Working Group
Cognashene Cottagers Association
Crane Lake Association
Eastern Georgian Bay Stewardship Council
Environment Canada Ecological
Gifts Program
Environment and Climate Change Canada
Georgian Bay Association

Georgian Bay Biosphere Reserve Inc.
Georgian Bay Forever
Georgian Bay Today
Georgian Bay Township
Great Lakes Basin Conservancy
Honey Harbour Association
Huron Community Foundation
Iron City Fishing Club
Madawaska Club at Go Home Bay
McMaster University
Nature Conservancy of Canada
North Channel Preservation Society
Ontario Land Trust Alliance

Ontario Ministry of Natural Resources
and Forestry
Pointe au Baril Islanders' Association
Parks Canada – Georgian Bay Islands
National Park
Parry Sound Chamber of Commerce
Sans Souci Copperhead Association
South Channel Association
Township of the Archipelago
University of Guelph
Wah Wah Taysee Association
West Carling Association
White Squall Paddling Centre

Many Thanks to our Generous Sponsors



THANK YOU

Cumulative Giving

LUMINARIES

Over \$500,000

John & Margaret Catto

VISIONARIES

Over \$300,000

Geordie Dalglish Family

Robert & Julia Foster

Wally & Marilyn King

AMBASSADORS

Over \$200,000

Sheila MacFeeters & Michael Williams

The W. Garfield Weston Foundation

Annabelle White

CHAMPIONS

Over \$100,000

Jean Hughes

The Langar Foundation

Estate of William Marrow

Robin & Robert Ogilvie

Bill & Carol Prior

Tom & Pamela Scoon

Estate of Kay Sloan

TD Bank

John & Josie Watson

Galen & Hilary Weston

PIONEERS

Over \$50,000

Rick Balaz

Jennifer Ivey Bannock

Bruce Croxon & Debra Thier

Fred & Sue Dalley

Elizabeth Davidson

Ann & David Doritty

Echo Foundation

Jon & Shelagh Grant

Stephen & Catherine Griggs

Jackman Foundation

Donald & Lorraine Lawson

Wendy Matheson

McLean Foundation

Paul & Martha McLean

Payne Marine

Sandy & Marilyn Phillips

Samuel Family Foundation

Dave & Bev Stager

John & Chris Stark

Janny Vincent

TRUSTEES

Over \$20,000

Martin Abell & Kim Dalglish

John & Karen Agnew

David Anderson

David & Shelagh Blenkarn

Ian & Margaret Carmichael

Stephen & Jane Chisholm

Dr. T. James & Maureen Cooper

William & Patricia Culp

Jennifer Dattels

Ruth & Neil Davis

Michael & Honor de Pencier

Desmasdons Boatworks

John & Sybil Eakin

Sted & Robin Garber

Dr. Ralph S. & Caroline Grose

Doug & Sue Grundy

Douglas Hall

Elizabeth Hall-Findlay

John Hartman

Adam Howard & Janet Neilson

Ernest Howard

Iron City Fishing Club

John Irving & Janet Turnbull

Ted & Alice Kernaghan

Kopas Family Foundation

LeVan Family Foundation (*a fund held within the Oakville Community Foundation*)

Barbara & Dougal Macdonald

Steve Mason Family

The McDonald Family

Ada & Hugh Morris

Murray & Susan Armitage Foundation

at the Toronto Community Foundation

Michael & Agneta Owen

Francie & John Pepper

Norm Playfair & Kim Kormack

Emery & Tara Prior

Rob & Val Thompson

Jan Ruby & Mary Thomson

William J. & Meredith Sauderson

William & Joy Sayers

Stewart H. (Nick) Steffy Jr.

Topper Linen

Janet Veale

Phil Wilson

Anonymous

Land & Easement Donors

Douglas Alexander

John Austin

Betsy Bascom

Gordon Bongard

Kim Bozak & Philip Deck

Michael Steven Brown

Catherine, Doug, Gillian & Lesley Cameron

Glen & Jane-Anne Campbell

John & Margaret Catto

Nancy & Ted Christie

Jennifer Dattels

Patricia Davidson

Bill Detmer & Angel Lillard

Caroline Duncanson

Anna Edels

Edgar Edels

Kevin Gillen

Lyn Gillespie

Doug & Ruth Grant

Joan Grierson

Stephen Gunn & Patti Bunston-Gunn

Patricia & Bill Hamilton

William & Pat Harris

Philip & Nancy Havens

William & Marion Holton

Adam Howard & Janet Neilson

George Hume

Jay Ingram

Mary Elizabeth Jeffries

Lynn & Ned Jessen

Cynthia & Peter Kemerer

John Kleinschmidt

Barb, Jeff & Jim Kofman

Elizabeth, Hugh & Joan MacCallum

Jim & Jill MacKenzie

Dr. Cortland Mackenzie

Manitou Association

Stephen Martin

McCarthy Family

C.C. McGibbon

Ian & Maureen McGibbon

Julia E. McLaughlin

Mary McPherson

Michael John Mitchell

Polly E. Naughton

Percy & Mary Nelson

David, Evelyn, Kimberley, Margaret,

Martha & Peter Newell

Northey Family

Jack & Maria Nowack

Oak Bay Developments Inc.

Pointe au Baril Islanders' Association

Jim & Paula Preschlack

Joan Robinson

Brian Rogers

David Russell

William H. Russell

Jane Schneider

Tom & Pamela Scoon

Marilyn & Paul Shepherd

Craig Shibley & Caroline Coulson

Bob & John Suter

Rob & Val Thompson

Robert Thomson

George Wilson

Donald & Jane Wright

Donald Paton Wright

Barbara Zimmerman

Anonymous Donors

DONORS

Your generous donations ensure that the spectacular wilderness of our unique archipelago is protected in perpetuity. We are honoured to celebrate the following supporters who made gifts from January 1 through December 31, 2018.

PROTECTED PROPERTIES

Our deepest appreciation to those who donated property or conservation easements, or made contributions for land protection projects in 2018:

Dattels Reserve Expansion, Pointe au Baril

Jennifer Dattels

Estelle's Reserve, Blackstone Lake

Anonymous

Ingram Biodiversity Reserve, Honey Harbour

Jay Ingram

Land Acquisition Fund

Margaret & John Catto
Ida Lynn Stankie

PLEDGE FOR THE BAY

The five-year Pledge for the Bay enables the Land Trust to better plan for the future in land protection, stewardship, education, and outreach, knowing resources are in place from committed supporters. Thank you to these supporters for your generous pledges:

Leader of the Bay (\$25,000 over 5 years)

David Anderson
Jennifer Ivey Bannock
Margaret & John Catto
Stephen & Jane Chisholm
Dr. T. James & Maureen Cooper
Sue & Fred Dalley
Ann & David Doritty
Doug & Sue Grundy
Donald & Lorraine Lawson
Mason Family Foundation
Paul & Martha McLean
Robin & Robert Ogilvie
Francie & John Pepper
Mr. & Mrs. Sanford Phillips
Tom & Pamela Scoon
Jan Ruby & Mary Thomson
Janny Vincent
Anonymous

STEWARDSHIP FUNDS

Stewardship Funds are long-term investments that support the ongoing annual stewardship of our protected properties. Thank you to those who made contributions in 2018:

Legacy Stewardship Fund

Wendy Beck
Marilyn & Paul Shepherd
Kathleen E. Wells

Andy Griggs Memorial Fund, Pointe au Baril

Dave & Bev Stager Sandy Island Stewardship Fund, Sandy & Martyr Islands

Douglas & Marylon Alexander Stewardship Fund, Wah Wah Taysee

Doug & Ruth Grant
Michael Wenban & Virginia Froman-Wenban

Watson Family Stewardship Fund, Cognashene, Go Home Bay & Honey Harbour

Caroline Grose
Andy & Cathy MacRae
Peter S. Watson

WALLY & MARILYN KING FAMILY FUND

The Wally & Marilyn King Family Fund supports initiatives that increase knowledge and appreciation of the environment, culture, and communities of eastern Georgian Bay and the North Channel. Thank you to those who made contributions in 2018:

Wally & Marilyn King

ANNUAL SUPPORTERS

Our achievements are shared with our generous supporters who care about the conservation of Georgian Bay as much as we do. Thank you to all those who made contributions in 2018:

\$100,000 - \$249,999

The Estate of Sheila MacFeeters

\$50,000 - \$99,999

Margaret & John Catto
Great Lakes Basin Conservancy

\$25,000 - \$49,999

Ontario Land Trust Alliance

\$10,000 - \$24,999

Adanac Realty Limited
Charlie Ballantyne
Jennifer Dattels
DFH Public Affairs
Environment & Climate Change Canada
LeVan Family Foundation
(a fund held within the Oakville Community Foundation)
The McDonald Family
Nature Conservancy of Canada

\$5,000 - \$9,999

Helen McCrea Peacock Foundation
Iron City Fishing Club
Estate of David Keenleyside
Wally & Marilyn King
Philip & Eli Taylor
Rob & Val Thompson

\$1,000 - \$4,999

Murray & Susan Armitage Foundation at Toronto Foundation
Jim & Mary Anne Ballantyne
C. Derek S. Bate
Douglas & Margarete Carr
CIBC
Hon. William G. & Kathleen Davis
Bill & Julie Deeks
Michael & Honor de Pencier
Michael & Maureen Douglas
Jason Drysdale
Paul John Eakin
Andrew Fabens III
Robert & Julia Foster
Mr. & Mrs. Stedman Garber
Doug & Ruth Grant
John & Shelagh Grant
Dr. Ralph & Caroline Grose
Elizabeth & John Hackett
Martha Hall Findlay
John & Patricia Hardy
Adam Howard & Janet Neilson
Ernest Howard
Randal Hughes & Nancy Main
Blake & Janet Murphy
Jackman Foundation

Peter Koetsier & Wendy Wingfelder
Jean Koetsier-Adams
Robert & Patricia Lord
Barbara & Dougal Macdonald
Andy & Cathy MacRae
Ruth Mandel
Sue, Biff, Graham & Trevor Matthews
James A. McIntyre
Jamie & Lynn Murray
Evelyn B. Newell
Nosreap Family Foundation
Barksdale Penick
Dr. Norman Playfair
William & Meredith Saunderson
Joy & William Sayers
Karl & Bev Schiefer
Michael & Sonja Stewart
Marvin & Pamela Tarek
Tim Topornicki
Maryanne Turcke
John Watson
Peter S. Watson
Mark & Sarah Whitener
Donald & Sandra Wilson
Rob & Fran Woodroffe
Richard Woodruff

\$500 - \$999

Mr. & Mrs. Douglas Alexander
Roger & Diane Ashton
William Attwell
Clair Balfour & Marci McDonald
Reed Ballon
Donald Bartlett
Amy Beament
Shannon Beddoe
Penelope Bell
Tassie Brautigam
Doug & Mary Lou Brock
David Burt
Butler Family
Nancy Christie
Peter & Cathy Cooper
Jane & Lawrence Corke
Susan Cross
Brien Dane
Michael Eakin
Andrea Ferin
Douglas Hall
Patricia Hamilton
Phil & Nancy Havens
Susan & David Herbold
Bruce & Lynn Hernandez
Jim & Anne Hilmer
Adair & Ian Hope
Mary Hudson & C. David Gifford

Cynthia & Peter Kemerer
The Land Family
Marco Leyton & Katie Russell
Jim & Jane Lotimer
Bill Loughheed
George Loughheed
Laura MacFeeters
Nancy Matheson
Wendy Matheson
David & Inez McCamus
Sarah McCoy & Jim Buchanan
C. Ann McKibbin
Mark McLean
Marion McLeod
G & B McNabb Lumber
Company Limited
The Pathfinder Foundation
Alex & Kate Ramsay
Mr. & Mrs. R.G.H. Robertson
Nancy & Jim Rogers
Carolyn Rymell
Gregg Scott
Mr. & Mrs. W.A. Scott
John Shaw
Ted Simmonds
Cathy & Rick Southee
The van Tulleken Family
Judy & Larry Ward
George Wark
Robert Weekes
Kathleen E. Wells
George & Helen Will
Mary & David Wright
Peter Wright
Anonymous (2)

\$150 - \$499

John Abbott
William & Jane Abbott
Pam Aitken
Lisa Applegath & Tom Trimble
Harvey Armstrong
Gregg & Kate Badger
Peter Baines
Gini & Randy Barbato
David & Christine Bennett
Suzanne Bennett & Jim Lisowski
Jim Blackwood
Mary Boeckh
Sandy Boeckh
Walter M. & Lisa Balfour Bowen
Sandy & Gloria Boyd
Lili & Hank Brunnader
Maureen & Don Buchanan
Gordon & Karolyn Burkhart-
Schultz
Jane Carnwath
John & Deborah Chalmers
Frederik Crawford
Dean & Pat Crossett
Michael Cruickshank
Fraser Dane
Bob Davie & Jean Richardson
Donna Douglas
Robert & Caroline Duncanson
Patrick Edwards
Gillian Faulkner
Gregory & Diane Finkle
Jean Friedel
Charles Gane & Robin MacAulay
Michael & Michelle Gordon
Angela Granziera

Scott Greene
Brooks Greer
John & Mary Hamilton
Catherine Harrison
David & Mary Harvey
Barbara Hayes
Ian Hayes
Ian Henderson
John Hill
Judith Horner & Hammond
Bentall
Elizabeth Hugessen
Mrs. Scott R. Inkley
Johnnie-Mike Irving & Georgia
Siewwright
Martha Ivester
Rod & Joanne Jones
Sarah Koetsier
Ryan Kroeker
Jim Leavens
Sally Lovett
Mr. & Mrs. Campbell MacArthur Jr.
Margot Mackay
David & Joan Matthews
John & Pinky McAllister
Ron & Anne McClure
William B. McCoy &
Natasha Beery
Nancy & Doug McFadden
Pam & John Mitchell
Anne Marie Moliski
Molly Mulloy
Fred Munn
Craig & Pam Murchison
Margaret Newell
Susan Newell & Bill Molesworth
Nutz Knob Islanders
Katie Overstrom
Barbara Parton
G. Pederson & Associates
John Pepperell
William Petrie
Lloyd & Pat Posno
The Print and Drawing Study
Centre, Art Gallery of Ontario
Ruth Reisman
Herta Rodina & David Sharpe
Roma & Anthony Sapijonis
Peter Scandrett
Roy Schatz
Marilyn & Paul Shepherd
Peter & Dallis Smith
Thierry Spiess
Celia, George & Jeremy Squire
Beverly Stager
Ida Lynn Stankie
Audrey Stratton
Margaret & Walter Szwez
Vincent Tangredi
Chris & Julie Thompson
The John & Victoria Tremayne
Family Foundation
Gillian Uy
Joe & Jadzia Von Heymann
Roland Walker
Michael Wenban & Virginia
Froman-Wenban
Albert & Joan White & Family
Sarah White
Jane Whitwell
John & Jennifer Wright
Anonymous (6)

\$1 - \$149

Beth & Peter Adams
Jennifer Allen
Kevin & Dianne Ambrose
Patricia Anderson
Lorraine Armstrong
Marla Ashmore
Lady Marcia Astor
Christopher Baines
Sandy Baker
John Banks
Douglas Barrett & Hattie
Reisman
William Bartram
Graeme Bate
James A. Beatty
Gregor Beck
Kathleen Beck
Wendy Beck
Drew Belshaw & Susan Charles
Judith Bialkowski
John & Dody Bienenstock
Peter Bigney
Sandra Birnbaum
Robert & Margaret Bissell
Scott Blair
Thomas Bogardus &
Robert De Haan
Cathy Bongard
Peter & Rita Boruta
Robert & Barbara Bradey
Coco Brennan
Jack & Lani Broadbent
Janet Brough
David & Sonja Brown
Joanne & David Browne
Neil & Judy Cameron
Bill & Joyce Chesnut Family
Robert Clegg
Tanja Cleland
Paul Cockfield, Patricia Sherer,
Cathy Yount & Debra Chielens
Ava & Daniel Cout
Marg & Jim Cowan
Patsy Cross
Angus Cunningham
Geordie Dalglish & Swith Bell
Martha & Alf Davis
Anna de Langley
Roman & Virginia Dementavicius
Tom Denune & Teresa Long
Benjy & Molly Diesbach
Mr. & Mrs. Peter C. Dobell
Mac & Debbie Donley
Marguerite Doritty
Michael & Cameron Drinkwater
Sara Duncanson
Lynne Edgerton
Leigh & Bud Eisenberg
Liz & Nigel Etherington
Melanie Fellowes
Kurt & Cynthia Fischer
Anne & Bob Fisher
Joan Fisher
Donald Ford
Bill Fowler & Mary Wolf
Susanne Gage
Pamela & Harold Garfinkle
Diane & Stan Gasner
James Gee
Kevin Gillen
Linda Gillespie

Robert Gillespie
Jane Glassco
Lynda & Mario Golini
Meg Goodman
The Goodman Family
Tim & Barbara Gorka
Barbara Greer
Mary Greer
Richard Greer
Linda Hall
Betsy Hall-Findlay
Mary Hallock
Lisa Harding
David & Penny Harris
Joseph Hartman
Chris & Nina Hawley
Neil Hayward
Janice Hebert
Tim & Judy Higgins
Mark & Marilyn Hiseler
Ross & Daralyn Hodgetts
Janine Holman
Henk & Moira Hoogeveen
R. Gary Horne
Jim & Lisa Houston
Morgan Hultquist
George Hume
Julie & Bob Hunter
Tara Hunter
John & Eileen Hutton
Matt Irwin
Louise Jacques
Duncan & Robyn Jones
Robin Jones
David Kaufman
Tom Kazmierowski
Terence Ashley Keenleyside
Natalie Kemerer
Estate of Elizabeth Ketchum
Mary Ketchum
Michael & Margaret Ketchum
Philip & Catherine Kidston
Kelly Killoran
John & Nellie Kinnear
Midford Kitchen
William Kitchen
Barb Koetsier
Jennifer Koetsier
Jeffrey Kofman
Jeff & Cindy Kuchman
Dave Kwinter
Nancy Kyle
Jean Labrecque
David Lailey
Sam Landzberg
Valerie Lang
John Lawler
Wendy Lawson
Victoria Lee & Philip Hebert
Wendy Lee
Diane & Michael Leuty
Nancy E. Lohr &
Claudia M. Borders
Jim Lorrinan
Gabrielle Lotimer
Dylan Loughheed
John Lounds
Mike Loveys
Fraser MacDonald
Wendy Melhuish MacFadzean
John & Carol Macfarlane
Jim & Jill MacKenzie

Mary Anne Macleod
 Madawaska Club of
 Go Home Bay
 Bertha Madott
 Jane Maher
 Ruth Main
 James Marshall
 T.B.K. Martin
 William & Elizabeth Maxon
 Rhona McCallum
 T.K. & Emily McClintock
 William C. McCoy
 Ian & Maureen McGibbon
 Tanja McPherson & Kevin Sloan
 Anne McRuer
 Sara Menzel & Derek Brackley
 Carolyn Miller & Larry Cohen
 Robert Miller & Dana Hooper
 Dianne Monnot
 Scott & Ellen Moody
 Anne Morison
 Denise Mulvey-Ballentine
 Dave & Colleen Murphy
 Cynthia Neely & Tom Davies
 Mary Nelson
 David & Kimberly Newell
 John Newell
 Martha Newell
 Dean & Elaine Nicholls
 Joan Northey
 Mrs. Maria Nowack
 Candace Otte
 Suzanne Pausner
 Deborah Phillips
 Yvonne Pigott
 Doug Plaxton
 Anna Porter
 Bob Ramsay
 Harvey Robbins
 Nick Roberts
 Trevor & Raechel Robertson
 Lu & Bee Robitaille
 Andrew Rogers & Diane
 Dempsey
 Marguerite & Stuart Rogers
 Mr. & Mrs. Brian Rohde
 Catherine Rodd
 Mary & Chuck Roth
 Douglas & Jane Rowan
 Mary Ruby & Wood Hill
 Joanna Ruby-Armstrong
 Karl Schiefer
 Jennifer Schoch Family
 & Richard Tucker
 Howison Schroeder
 Derek Scott & Alexandra
 Campbell
 Vivian & Dick Selman
 Judith Shaw
 Shopbrain
 Robert Simpson
 Gordon W. Smith
 Laurence Smith
 Carl Spiess
 Bob & Bev Stofko
 Suzanne Stohn
 Mr. & Mrs. Frank Stoner
 Kelly Sullivan
 Brett Sura
 Sarah Tawaststjerna
 Barb Teoli
 Cleve & Linda Thurber

Peter Timmins
 Philip & Maureen Tingley
 Amy Tinsley
 Keith Townley
 Chris Tse
 Edward Tse
 Julia & Casey Vandenoever
 Tony Weldon
 West Parry Sound Snow Sport
 Association
 George & Beverly Westacott
 David White
 Mr. & Mrs. Joseph Willard
 Susan Wilson
 John Wingfelder
 Laura Wingfelder
 Alice Winn
 Jim & Marney Winn
 Peter & Susan Winnell
 Richard & Sue Woodhouse
 Anna Woodson
 David & Lynn Woodward
 Elinor Woodward
 Worts Family
 Victoria Wright
 Robert Wyatt
 Claudette Young
 Michael Young
 Valerie Zawilski
 Sue & Merle Zoerb
 Anonymous (18)

TRIBUTE GIFTS

In Memory

Joe C.W. Armstrong
 Jane Betts
 John Birnbaum
 Robert Burbank
 David & Mary Copp
 John de Pencier
 John W. Duncanson
 Diana Eakin
 Barb Hinterhoeller
 Bill & Marion Holton
 Wendy Hooegeveen
 Doug Jones
 David Keenleyside
 Joyce & Oscar Kofman
 Hugh Rogers Lawson
 Pat Lawson
 Dorothy Leonard
 Ruth & Jack McCuaig
 Connie McDonald
 Donald McGibbon
 James Monnot
 Rob Moore
 Warren Moysey
 Gerald W. & Gail H. Murphy
 Margaret Bernice Norris
 Jerry Norton
 Julia Ormsby
 Dr. Herbert C. Ratz
 Michael Scarlett
 Norma Spoon
 Yvonne Bates Spoon
 Patricia Tomlinson
 Ken Trudeau
 Mary Turnbull
 Douglas Warner
 Joyce Watson
 Jinny Weekes
 Beverly Anne (France) Weiss

Charles Wilde
 Pam Will
 Dr. Melanie Williams
 Walter & Stella Yusko

In Honour

Clair Balfour
 John & Jenn Bate
 Fred Beck & Susan Woods
 Kerry & Brenda Benson
 Cathy Bongard
 Sandy Boyd
 Barb & Loren Crabtree
 Geordie, Louisa, Marigold &
 George Dalglish & Swith Bell
 Tom Kazmierowski
 Wally & Marilyn King
 Stoney, Bill, Joey & Bubba
 Lougheed
 Scott Moody
 Adam Beddoe Morrison
 Susan O'Reilly
 Max Poschmann & Jaela Baxter
 Mary Sarjeant
 Karl Schiefer
 Colin & Tim Shepherd
 Karen Short & Doug Neviera
 Rob & Val Thompson
 Alf & Rosemary Vaughan
 Janny Vincent
 Gillian & John Woodrooffe
 Everitt Youngkin

LEGACY GIFTS

Including a gift to the Georgian Bay Land Trust in your will or estate plans is a special way to leave a legacy to wilderness. Thank you to those who have planned a future gift:

Wally King Legacy Circle

Dr. Ralph S. & Caroline Grose
 Dr. David R. & Susan Herbold
 Wally & Marilyn King
 Donald & Lorraine Lawson
 Peter S. Watson
 Anonymous

Legacy Stewardship Gifts

John & Margaret Catto
 Peter & Cathy Cooper
 Susan Forrester & Frederick
 Dalley
 Ann & David Doritty
 Jon & Shelagh Grant
 Dr. Ralph S. & Caroline Grose
 Donald & Lorraine Lawson
 Peter S. Watson

If you would like to leave your legacy for the Bay we all love, please contact Janet at 416.440.1519 x104 or janet.brough@gbt.org.

SPONSORS

C.C. Tatham & Associates Ltd.
 Central Marine
 Desmasdons Boatworks
 Georgian Bay Landing
 Georgian Bay Spirit Co.
 Payne Marine

BAYSCAPES ART AUCTION

Sponsors:

Artscape
 Ian MacDonald Architect Inc.
 Kernaghan & Partners Ltd.
 Martin Merry & Reid Ltd.
 Spiess McGlade Asset
 Management
 Vincent Associates

Food & Beverage Partners:

Dough Bakeshop
 Georgian Bay Spirit Co.
 Glencairn Wines
 Norse Brewery

Entertainment:

Madz & Luke

Silent Auction Artists & Contributors:

Elizabeth Berry
 Gill Cameron
 Stephen Chisholm
 Chocolat de Kat
 Don Corbett
 David Doritty
 Ariel Estulin
 Nick Eyles
 Jake Fowell
 Dr. Michael Francis
 Bill Franks
 Sylvia Galbraith
 Georgian Peaks
 Ralph Grose
 Lisa Hannaford
 Martha C. Klein Henrickson
 David Hodgetts
 Joan Honsberger
 Kaz Jones
 Jen Kernaghan
 Heather LaRue
 Jim Lawson
 Bert Liverance
 Jim Lorrigan
 Ron Loveys
 Jonathan Mahood
 Claudia Mandler McKnight
 Pam Mayhew
 Patricia Peacock-Evans
 Martha Lailey Roberts
 Lisa Robertson
 Michelle Shook
 Susan Stevenson
 Sean Tamblyn
 Julie Thompson
 Johanna Van Kempen
 Jessica Vergeer
 Karen Walsh
 Kate Trusler Ward
 Jenn Wilkins
 Nora Wilson
 Wendy Wingfelder
 Leonardo Yokhana

In preparing this report, we have tried our best to be as accurate as possible. If there is an omission or a spelling error, please accept our sincerest apologies and contact us at 416.440.1519 x102 or info@gbt.org so that we can update our records.

OUR TEAM



DIRECTORS

Jan Ruby
Board Chair

Peter Koetsier
Treasurer

Shannon Beddoe
Secretary

David Browne
Investment Chair

David Bunston
Land Protection Chair

John Catto

Jim Cooper

Ian Davis
Stewardship Chair

David Doritty
Fundraising Chair

Nick Eyles

Andy Fabens

Jennifer Kernaghan
Communications Chair

Nick Steffey

Cindy Tripp

ADVISORS

Andy Alexander
Christopher Baines

James Beatty
Sandy Boyd
Graeme Burt
Nancy Christie
Peter Cooper
Fred Dalley
Neil Davis
Michael Drinkwater
Jon Grant
Stephen Griggs
John Hackett
Adam Howard
Jennifer Ivey Bannock
Graham King
Wally King
Donald Lawson

Diane MacDiarmid
Ian MacLeod
Sandy McCoy
Sandy McLaren
Paul McLean
Evelyn Newell
Michael Owen
Dana Porter
Carolyn Rymell
Georgia Rennick
Karl Schiefer
Tom Scoon
Carl Spiess
Richard Stark
John Stark
Janny Vincent
Barbara Zimmerman

STAFF

Bill Lougheed
Executive Director

Brooks Greer
Land Protection Program Manager

Janet Brough
Senior Development Officer

Sarah Koetsier
Communications Director
& Office Administrator

Irina Denissova
Bookkeeper





OUR MISSION

The Georgian Bay Land Trust acts to protect wilderness lands and species along the eastern shore of Georgian Bay and the North Channel and its near watershed, through strategic conservation planning, land securement, stewardship, research, and education.

OUR VISION

An eastern Georgian Bay and North Channel whose islands, shores, and inland watersheds are connected and strengthened by a network of protected natural lands and habitats, where native species thrive and people interact with the natural world.

OUR VALUES

Love and respect for our special place; Integrity and commitment to our work; Inspiring others to preserve this natural wonder.

Georgian Bay Trust Foundation, Inc. operating as Georgian Bay Land Trust
120 Eglinton Avenue East, Suite 1000 | Toronto, ON | M4P 1E2
416.440.1519 | www.gbtl.org

